



## Flash Tool Firmware Update

---

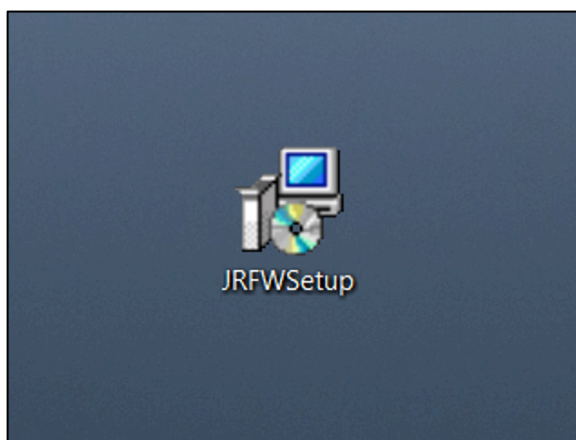
Download the latest flash tool firmware from [talon.jacksonracing.com/support](http://talon.jacksonracing.com/support).

Questions? Contact us at 909-927-8500 or [tech@jacksonracing.com](mailto:tech@jacksonracing.com).

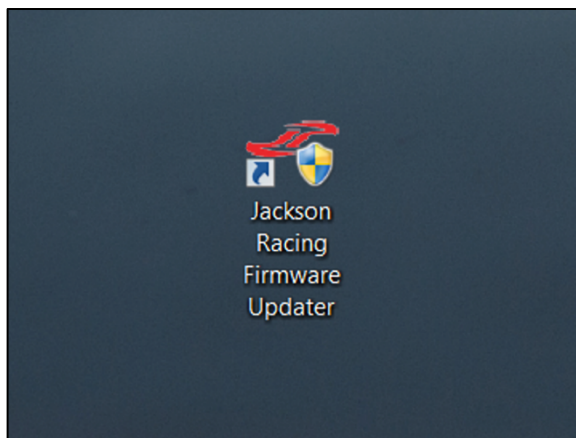
### Minimum System Requirements:

Windows 7  
Windows 8  
Windows 8.1  
Windows 10

1. Open the JRFWSSetup.exe file and follow the prompts to install. A driver will be installed to connect the flash tool to the computer.



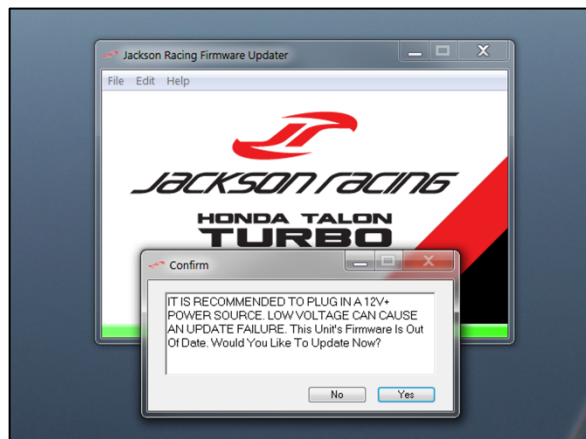
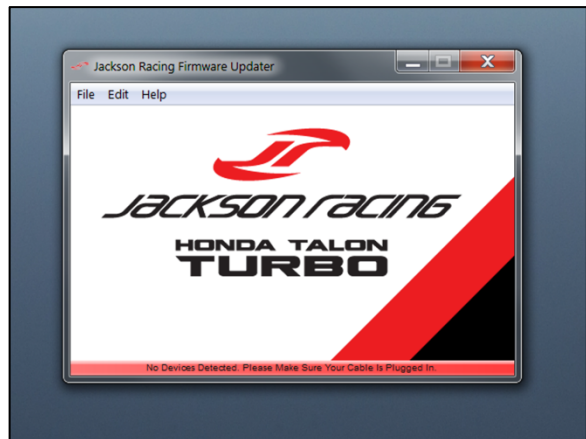
2. Once installation of the updater and drivers is complete, open the "Jackson Racing Firmware Updater"

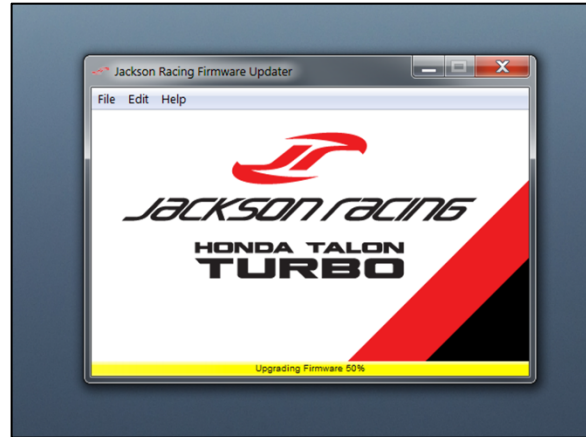


3. Once the updater application is open, plug your Micro USB cable into your Flash Tool, and plug the other end of the cable into the computer.

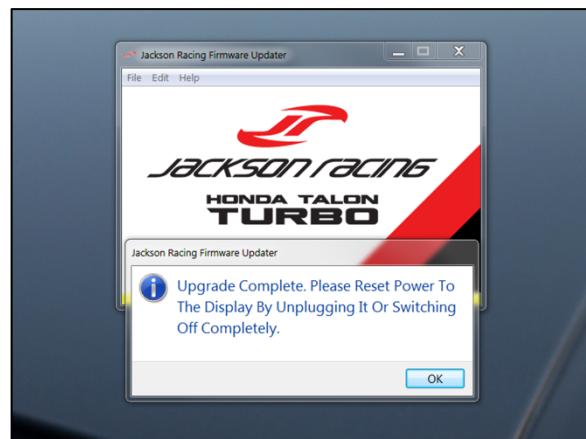


4. Once your Flash Tool is plugged in, you will see the red bar at the bottom of the application window turn green and a window will pop up notifying you to upgrade your firmware. You can complete the firmware update with or without 12v power. Select Yes, and let your update complete.

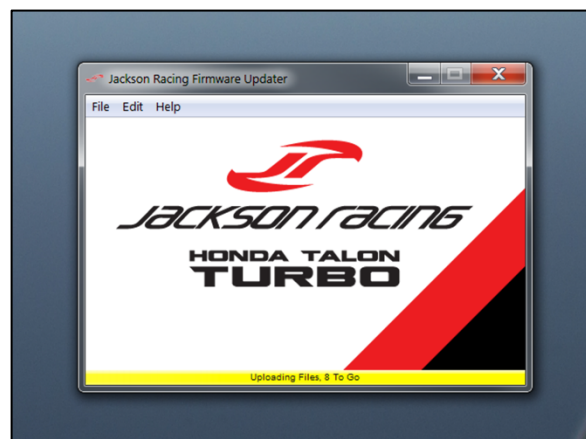




5. Once complete, you will get a window confirming your firmware is up to date. Select OK. You will see the green bar at the bottom of the application window. The green bar will then turn yellow and the updater will begin installing the most current calibration files to your Flash Tool. "Uploading a file" will appear on the Flash Tool screen. This can take up to 5 minutes. Once complete, the bar will turn back green.



6. With the latest firmware/files installed, Confirm the firmware version on the green bar and on the bottom right of the main menu screen on your Flash Tool. They should match the latest firmware version found at [talon.jacksonracing.com/support](http://talon.jacksonracing.com/support).



7. Reflash your Honda Talon with the latest firmware. Follow the flash instructions from your original installation instructions.